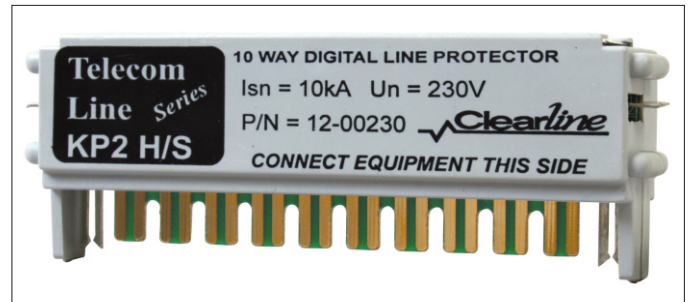


10 Way Digital Signal Line Protector

Features

- Economical single pair protection
- Low residual voltage
- Suitable for high speed networks
- Meets industry standards
- Reduces down time
- Increases network reliability
- 2 year warranty



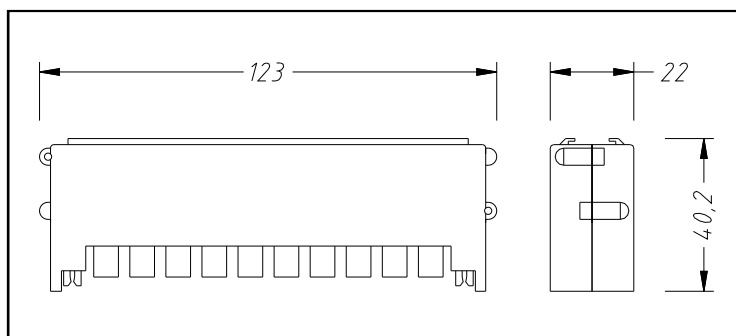
The Clearline KP10HS series 10way line protector uses state of the art semiconductor technology to protect telecom systems and networks from the damaging effects of induced lighting, AC induction and electrostatic discharges. In the normal mode of operation, the protection module is transparent to the functioning of the telecommunication system, but when the voltages exceed the breakdown voltages, the semiconductor activates and diverts the harmful energy away from the equipment being protected.

The 10 way line protectors are designed to interface with Krone LSA Plus disconnect blocks, and protect applications at telephone exchanges, remote cellular sites, building entrance terminations and equipment at customer premises.

Specifications

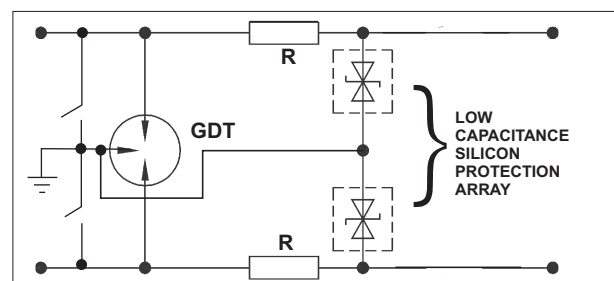
Number of pairs	10
Max. operating voltage	230VDC
Max. operating current	0.3A
Max. discharge current differential mode	400A
Max. discharge current common mode	10kA
Residual voltage at 5kA differential mode	200V
Residual voltage at 5kA common mode	200V
Series resistance (per leg)	3.3Ω
Temperature range	0°C to +70°C
Failsafe fitted	Yes
Data speed	0.2dB 10MHz

Dimensions



*Krone is LSA plus is registered trademark of Krone GMBH Germany

Circuit diagram



Designed and Manufactured by:

Clearline Protection Systems (Pty) Ltd

385 Roan Crescent Corporate Park North, Old Pta Road,

Midrand, South Africa

P.O. Box 5985, Halfway House, 1685

Tel: +27 (0) 11 848-1100

Fax: +27 (0) 11 314-3880

E-mail: info@clearline.co.za

www.clearline.co.za